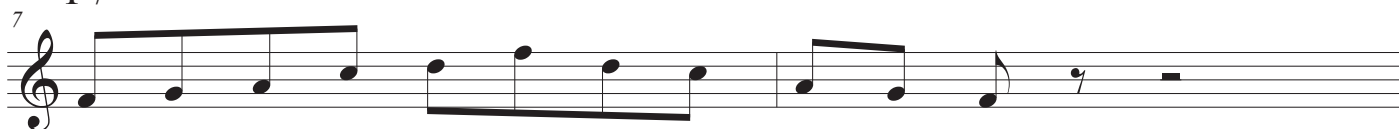


# PENTATONIC BLUES

Darren Lloyd

C<sub>7</sub>

In the two blues choruses, number 1, I am only using the Blues scale!

C<sub>7</sub>F<sub>7</sub>G<sub>7</sub>

In the two blues choruses, number 2, I am using the pentatonic for the chords.

So, if you see an F7 chord, play the F pentatonic. Even though F7 is chord V in the key of Bb (you can of course try this). I prefer this way, as it is simply (at first) play what you see.

C<sub>7</sub> = C pentatonic

F<sub>7</sub> = F pentatonic

G<sub>7</sub> = G pentatonic

What every dominat chord it is, simply play that pentatnic.

C<sub>7</sub> (A blues scale)F<sub>7</sub> (D blues scale)G<sub>7</sub> (E blues scale)

I like to also use the relative minor blues scale, I then get an extra note (the bluesy sounding minor 3rd).